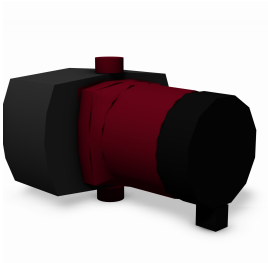


# REVIT CONTENT GUIDE

Manufacturer:	Grundfos
File:	Pump-Inline_Circulator-Grundfos_ALPHA2L-Master.rfa
Type Catalog:	Not Applicable
Rendering file:	Not Applicable
Schedule file:	Schedule - Pump-Inline_Circulator-Grundfos-ALPHA-Master.rvt



## Instance Properties

Construction	
Has Insulation	<input checked="" type="checkbox"/>
Graphics	
Annotative Symbol Native Radius*	0.125
Show Annotative Symbol*	<input type="checkbox"/>
Show Masking Regions*	<input checked="" type="checkbox"/>
Identity Data	
Equipment Number*	
Part Description*	Energy efficient, variable-speed circulator
Part Number*	ALPHA2 L 25-60 180

## Type Properties

The family contains the following 5 types:

- ALPHA2 L 25-60 180\_50\_95047564 (Values for this type are shown below)
- ALPHA2 L 15-40 130\_50\_95047560
- ALPHA2 L 25-40 130\_50\_95047561
- ALPHA2 L 25-40 180\_50\_95047562
- ALPHA2 L 25-60 130\_50\_95047563

Adsk Model Properties	
Approvals*	VDE,GS,CE,EAC
CE Approval*	<input checked="" type="checkbox"/>
Efficiency Rating*	0.23
Gross Weight*	5.247 lb
Product Model Number*	95047564
Product Range*	ALPHA2L
ProductCode*	ALPHA2 L 25-60 180
Pump Type*	Energy efficient, variable-speed circulator
Uniclass2*	Pr_65_53_86_11
Data	
Speed at the working points*	<a href="http://product-selection.grundfos.com/product-detail.html?productnumber=95047564&amp;custid=GMA">http://product-selection.grundfos.com/product-detail.html?productnumber=95047564&amp;custid=GMA</a>
Electrical	
Frequency*	50.00 Hz
Full Load Amperes*	0.38 A
Load Classification*	Other
MCA*	0.05 A
Number of Poles*	1
Number of Poles Integer*	2
Phase*	1

<b>Electrical</b>	
PowerFactor*	1.000000
RLA*	0.38 A
Voltage*	230.00 V
Wattage*	45000.00 VA
<b>Identity Data</b>	
Author*	Grundfos Holding A/S
Copyright*	Grundfos Holding A/S
Date Last Modified*	August 1, 2017
Description*	Energy efficient, variable-speed circulator
Equipment Abbreviation*	PMP
Manufacturer*	Grundfos
Manufacturer Website*	<a href="http://www.grundfos.com/">http://www.grundfos.com/</a>
Model*	ALPHA2 L 25-60 180
Model Disclaimer*	For more information, contact Grundfos
Original Creation Date*	August 1, 2017
Product Literature*	<a href="http://product-selection.grundfos.com/product-detail.html?productnumber=95047564&amp;custid=GMA">http://product-selection.grundfos.com/product-detail.html?productnumber=95047564&amp;custid=GMA</a>
Type Image	-1
URL*	<a href="http://product-selection.grundfos.com/">http://product-selection.grundfos.com/</a>
<b>Materials</b>	
Insulation Material	2390
Motor Material	2383
Pump Material	2383
<b>Mechanical</b>	
Enclosure Rating*	42 >1mm/Drip+tilt
Flow*	0.000 GPM
FluidTempMax*	230.00 °F
FluidTempMin*	35.60 °F
Head*	47.572 psi
Material*	Cast iron
Maximum Operating Temperature*	104.00 °F
Minimum Operating Temperature*	32.00 °F
Motor Efficiency Class*	0.23
Number of Impellers*	1.000000
Speed Type*	Variable

Half-tone text in the property tables indicates that the value is locked from editing.

\*Indicates Shared Parameter and can be scheduled

## Loading and Placing into the Project

One “Mechanical Equipment” family and one type catalog file are supplied and types may be loaded into Revit through the use of the type catalog. Using the visibility settings of the view that is intended for placement, ensure that the Mechanical Equipment category is visible.

The Pump is a “Breaks Into” model that will stay connected once placed onto a pipe in the project environment. Grundfos families have been designed for ease of use with the pipe routing system supplied within Revit. To use this functionality, ensure that the Pump is placed onto an existing pipe run.

## Project Behavior

Within the type and instance properties dialogues the user will find useful information for scheduling purposes such as Head, Flow, Voltage, Gross Weight, and other unique properties to the Pump.

There are different types within the type catalog to allow for the family to be configured to different sizes and flow rates in order to meet specific needs. The geometry is set to change with the project view’s detail levels. The external features represented on the product will change from a simplistic shape in Coarse and Medium level to a more realistic representation in Fine. There is also an option within the family to change the plan view representation to an annotation symbol rather than a physical masking region representation.

The family contains pipe connections to allow for the user to plumb their pump to the system. The connections also contain relevant data so that the

Grundfos Holding A/S  
Poul Due Jensens Vej 7  
DK-8850 Bjerringbro, Denmark

connected pipe system can accurately calculate the flow through the pump. The family also has an electrical connection that allows the family to be added to the systems circuit for load calculations.

## Instance Parameters

In the “Instance Parameters” of the model the user has the following options to modify:

- Show Masking Regions - For toggling the visibility of the masking region.
- Show Annotative Symbol - For changing the plan view representation to an annotation symbol.
- Annotative Symbol Native Radius - For inputting the desired radius for the annotation symbol.
- Has Insulation - For pumps supplied with insulation, this can toggle the geometry on and off.

## Type Parameters

Because the Pump represents a manufactured product the type parameters within the family should not be modified for Standard configuration.

## Visibility

For best performance within a project all model geometry is turned off in Plan View when placed in the product’s intended orientation. It is then represented by a masking region (or annotative symbol, see Instance Parameters) that will be visible on the product it is placed in. For ease of use all geometry is assigned to the category Mechanical Equipment.

## Rendering

When the family is loaded into a project standard Grundfos materials are imported. The materials may be modified, though ensure that the modified selection matches an actual manufacturer supplied option.

## Schedule Creation

Grundfos products may be scheduled utilizing the schedule view in the provided project file. Select and copy (Ctrl+C) the schedule from the sheet view and paste it (Ctrl+V) into a sheet in your project. The schedule filters are set to look for only families with Manufacturer as “Grundfos”.